

**TOWN OF BEDFORD
NEW HAMPSHIRE**

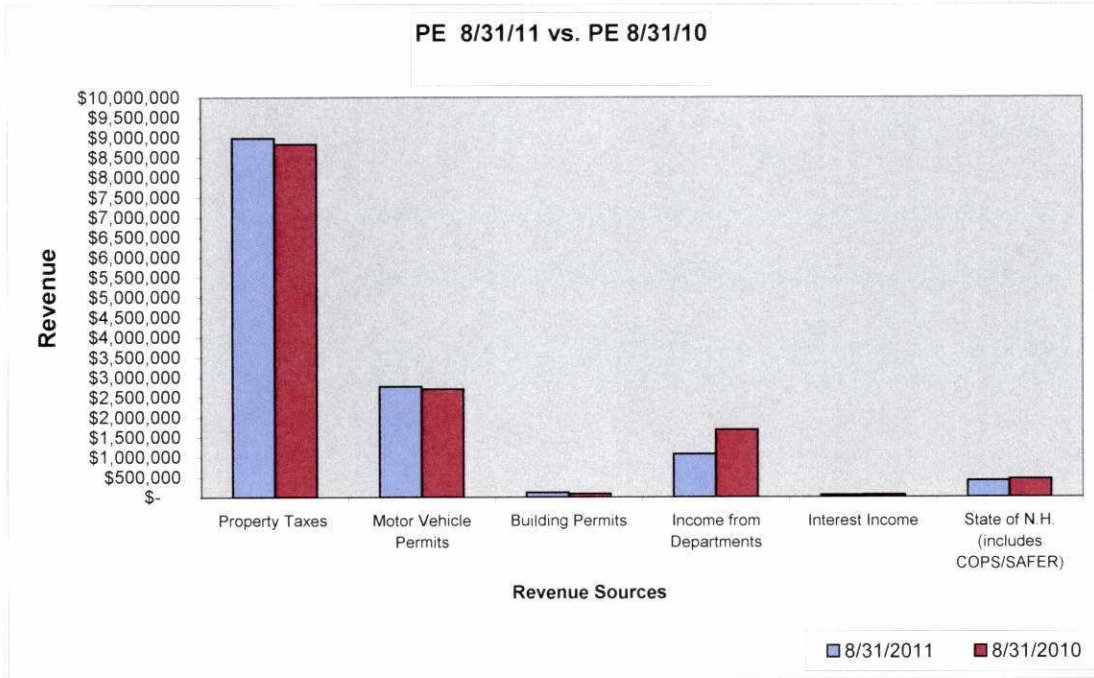


**BEDFORD TOWN COUNCIL
MONTHLY FINANCIAL REPORT
FOR THE MONTH ENDING AUGUST 31, 2011
Prepared by the Finance Department**

**Town of Bedford
Monthly Financial Report
Table of Contents**

YTD Revenue Source Comparison through August	Page 1
YTD Departmental Expenditure Comparison through August	Page 2
Monthly Revenue Comparison	Page 3
Monthly Expenditure Comparison	Page 4
YTD Overtime Comparison	Page 5
Motor Vehicle Annual Revenue Comparison	Page 6
Motor Vehicle Annual Permits Issued Comparison	Page 7

Town of Bedford
YTD Revenue Source Comparison
For Period Ending August 31, 2011 and August 31, 2010

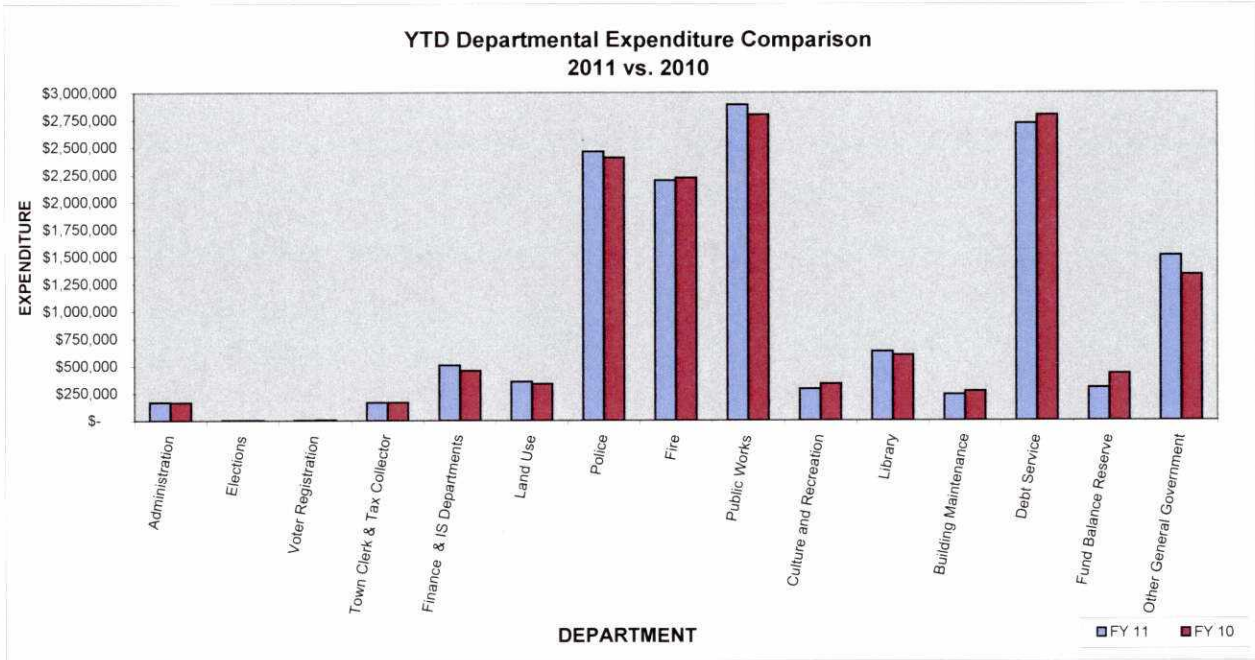


Revenue	YTD Through 8/31/2011	Percent of 2011 Budget	YTD Through 8/31/2010	Percent of 2010 Budget
Property Taxes	\$ 8,980,547 (1)	66.67%	\$ 8,827,241 (1)	66.67%
Motor Vehicle Permits	2,769,613	69.54%	2,706,041	67.35%
Building Permits	112,706	60.92%	78,556	62.84%
Income from Departments	1,071,513 (2)	56.76%	1,686,469 (2)	54.03%
Interest Income	46,547	42.32%	58,565	58.57%
State of N.H. (includes COPS/SAFER)	408,935	20.77%	451,104	28.14%
	\$ 13,389,861	61.97%	\$ 13,807,976	62.17%
Total General Fund Estimated Revenues	21,606,020		22,208,419	

Note1: Property Taxes are based on an eight month estimate.

Note2: The 2010 Capital Reserve transfers in totalled \$453,217, where as, the 2011 transfers in only totalled \$78,271.

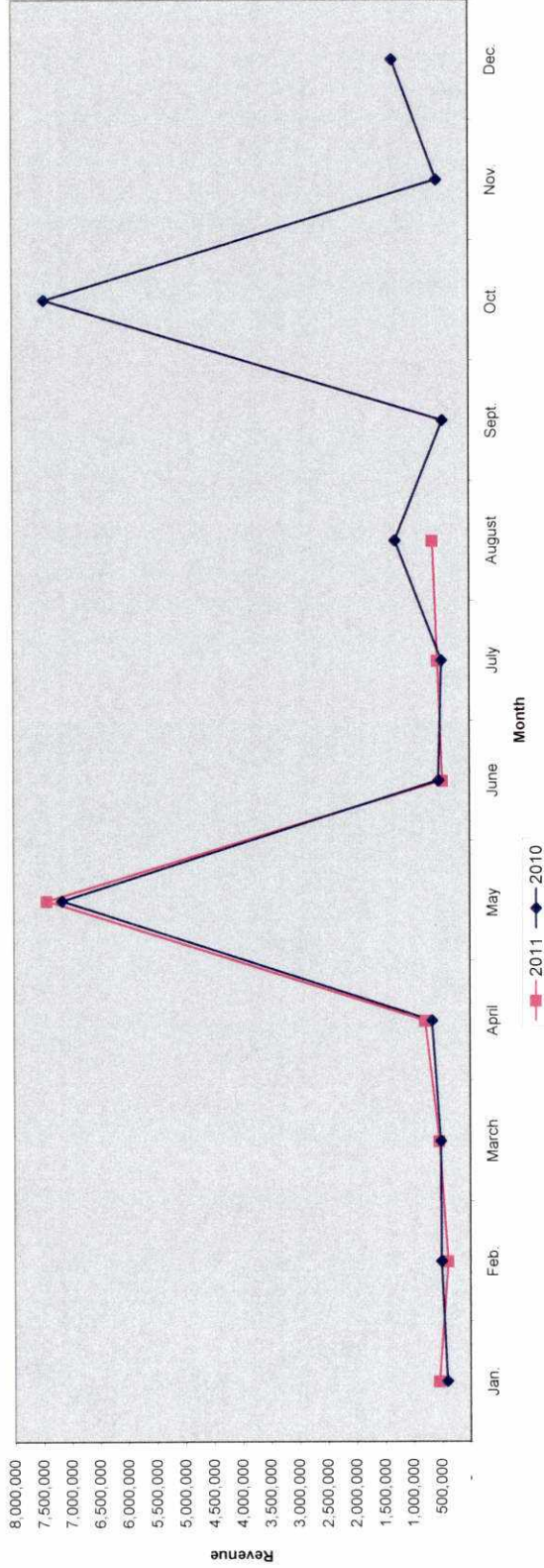
Town of Bedford
YTD Departmental Expenditure Comparison
For Period Ending August 31, 2011 and August 31, 2010



AUGUST					
Department	YTD FY 11		Percent of 2011 Budget	YTD FY 10	Percent of 2010 Budget
Administration	\$ 166,791		57.98%	\$ 165,039	13.61%
Elections	3,713	5	100.00%	4,173	22.39%
Voter Registration	3,960		25.98%	4,636	36.14%
Town Clerk & Tax Collector	163,994		64.06%	165,129	67.71%
Finance & IS Departments	505,919	1	69.53%	454,350	65.73%
Land Use	355,277		62.40%	334,851	63.33%
Police	2,459,929		66.24%	2,405,487	66.53%
Fire	2,195,534	2	59.39%	2,218,198	67.36%
Public Works	2,889,542	3	60.34%	2,797,350	63.81%
Culture and Recreation	287,720		67.40%	335,633	60.50%
Library	630,161		64.38%	598,717	61.49%
Building Maintenance	237,224		57.84%	267,438	68.95%
Debt Service	2,719,267		98.99%	2,794,871	98.56%
Fund Balance Reserve	300,000		100.00%	430,000	100.00%
Other General Government	1,509,298	4	56.21%	1,334,132	54.66%
General Fund Total	\$ 14,428,328		66.78%	\$ 14,310,004	64.44%
General Fund Budget	21,606,020			22,208,419	

- Note 1: The increase in 2011 Information Systems expenses is due to the retiring of one full time employee resulting in the increased need for outside services.
- Note 2: Fire includes \$95,039 expended and \$1,700 encumbered for the 2011 Swift Water Training grant.
- Note 3: Public Works includes \$200,000 for Perry Road in 2011.
- Note 4: The increase in Other General Government is largely attributable to the increased cost of Health Insurance.
- Note 5: Adjustments were made to the election budget since issuance of the last financial report. \$300.00 was transferred into the account, as well as a payment made by the moderator to cover the over expenditure for 2011.

Comparison of Monthly Revenues 2011 vs. 2010

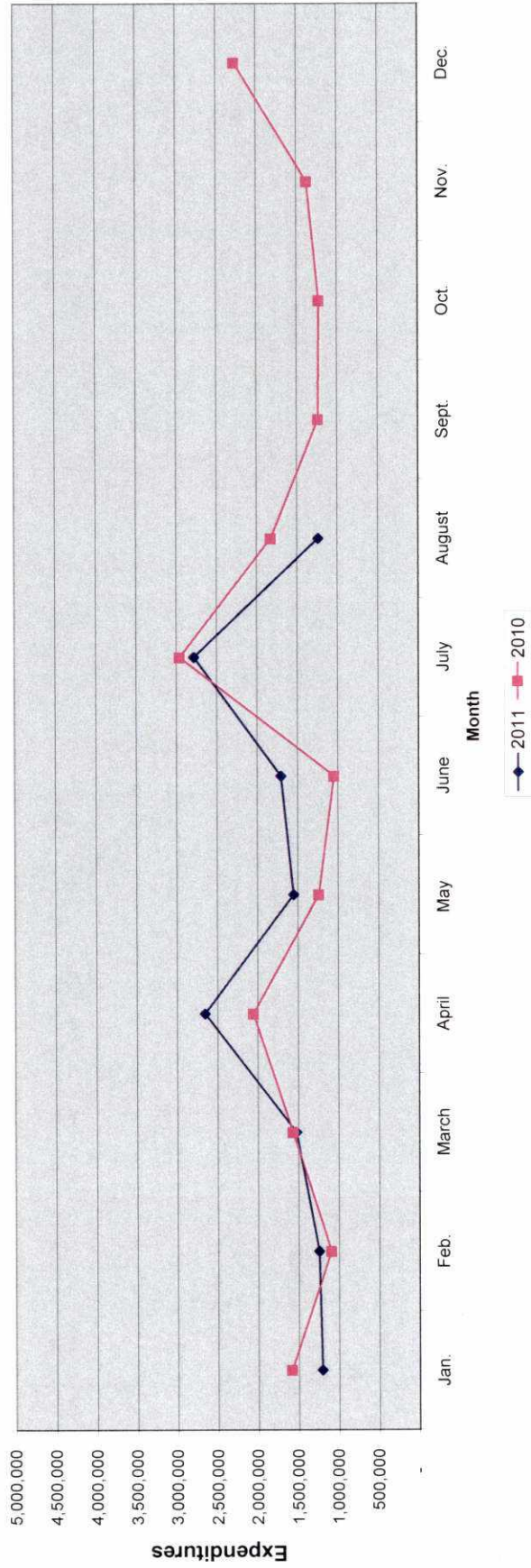


Year	Jan.	Feb.	March	April	May	June	July	August	Sept.	Oct.	Nov.	Dec.
2011	543,732	390,058	540,703	782,224	7,413,522	475,589	557,783	638,020	-	-	-	-
2010	414,645	513,591	523,212	674,849	7,159,010	552,682	494,971	1,301,592	469,749	7,446,851	565,076	1,342,420
	(1)	(1)		(2)				(2)				

Note1: The Town did not receive 2010 Highway Block Grant revenue until early February of 2010. In 2011, these monies were received in late January.

Note2: The 2011 capital reserve payment, which included transfers in of \$78,271 was made in April. The 2010 capital reserve transfers, which totalled \$453,217.00 was not made until August. August 2010 included \$113,000 from the sale of the Gault Rd property.

Comparison of Monthly Expenditures 2011 vs. 2010



Year	Jan.	Feb.	March	April	May	June	July	August	Sept.	Oct.	Nov.	Dec.
2011	1,209,717	1,247,679	1,526,216	2,655,133	1,553,151	1,708,056	2,785,883	1,238,886	-	-	-	-
2010	1,583,435	1,091,699	1,564,768	2,050,768	1,236,318	1,043,490	2,955,210	1,823,300	1,233,306	1,222,066	1,372,996	2,267,839

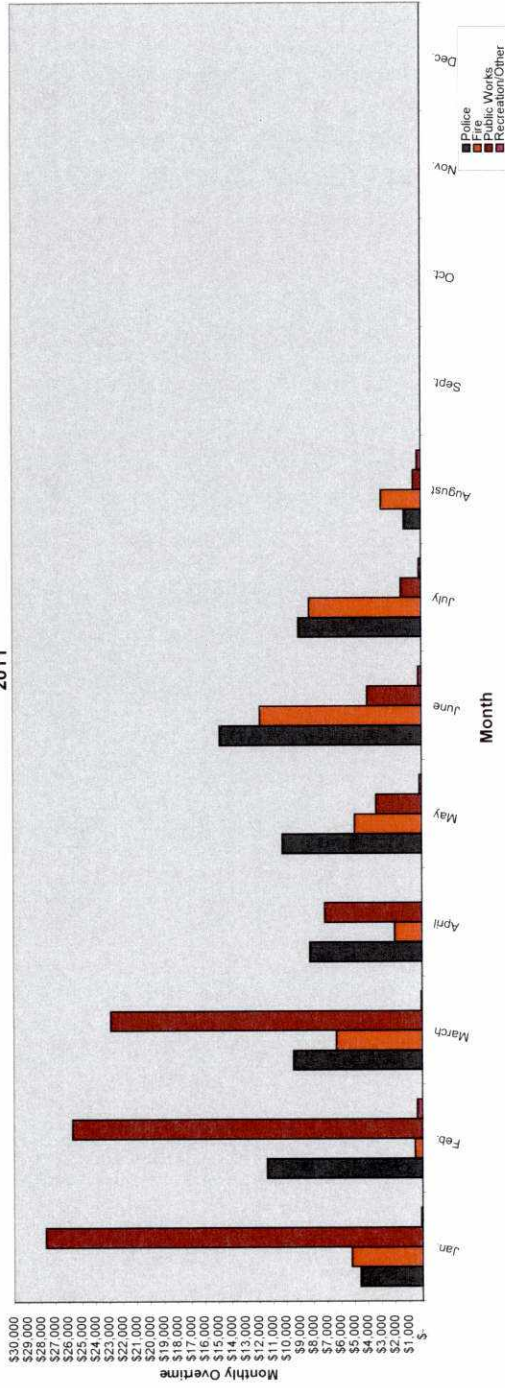
Note1: The 2011 capital reserve payment, which included \$621,500 of general fund expenses, was made in April. The 2010 capital reserve payment was not made until August.

Note2: May 2011 expenditures include: \$84,000 for Swiftwater Grant items and \$193,000 for Perry Rd work.

Note3: June 2011 expenditures include \$430,000 for the 13th biweekly payroll, where as the June 2010 expenditures only included 12 biweekly payrolls.

Note4: June 2010 expenditures included a year to date \$600,000 reduction for incorrect system coding of health insurance expense for January through May, \$162,000 for the purchase of a new ambulance and \$130,000 for the purchase of a dump truck.

Comparison of Monthly Overtime
2011



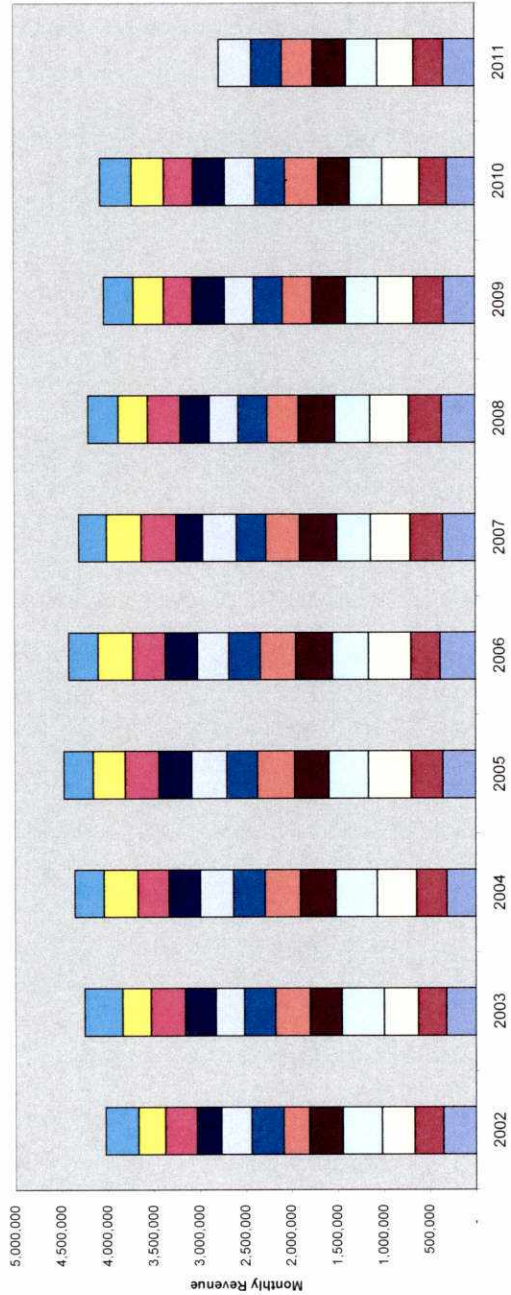
Department:	Jan.	Feb.	March	April	May	June	July	August	Sept.	Oct.	Nov.	Dec.	YTD
Police	\$ 4,555	\$ 11,423	\$ 9,454	\$ 8,242	\$ 10,244	\$ 14,834	\$ 9,012	\$ 1,239	-	-	-	-	\$ 69,003
Fire	5,189	545	6,315	2,002	4,920	11,867	8,202	2,908	-	-	-	-	41,948
Public Works	27,645	25,662	22,854	7,125	3,350	3,987	1,491	554	-	-	-	-	92,668
Recreation/Other	90	378	80	-	158	226	158	278	-	-	-	-	1,368
2011 Total	\$ 37,479	\$ 38,008	\$ 38,703	\$ 17,369	\$ 18,672	\$ 30,914	\$ 18,863	\$ 4,979	\$ -	\$ -	\$ -	\$ -	\$ 204,987

YEAR TO DATE
DEPARTMENTAL OVERTIME COMPARISON
2011 vs. 2010

Department	YTD AUGUST FY 11	YTD AUGUST FY 10	Percentage Change	FY11 % Of Budget	FY11 Amount Of Budget
Police	\$ 69,003	\$ 59,858	15.28%	73.60%	\$ 93,750
Fire	41,948	34,307	22.27%	56.69%	74,000
Public Works	92,668	61,238	51.32%	104.36%	88,800
Recreation/Other	1,368	1,599	-14.45%	38.00%	3,600
Total Overtime	\$ 204,987	\$ 157,002	30.56%	78.80%	\$ 260,150

Note 1: The increase in Police overtime is due to more vacation and sick coverage year to date.

Tax Collector's Office
Motor Vehicle Revenue By Year

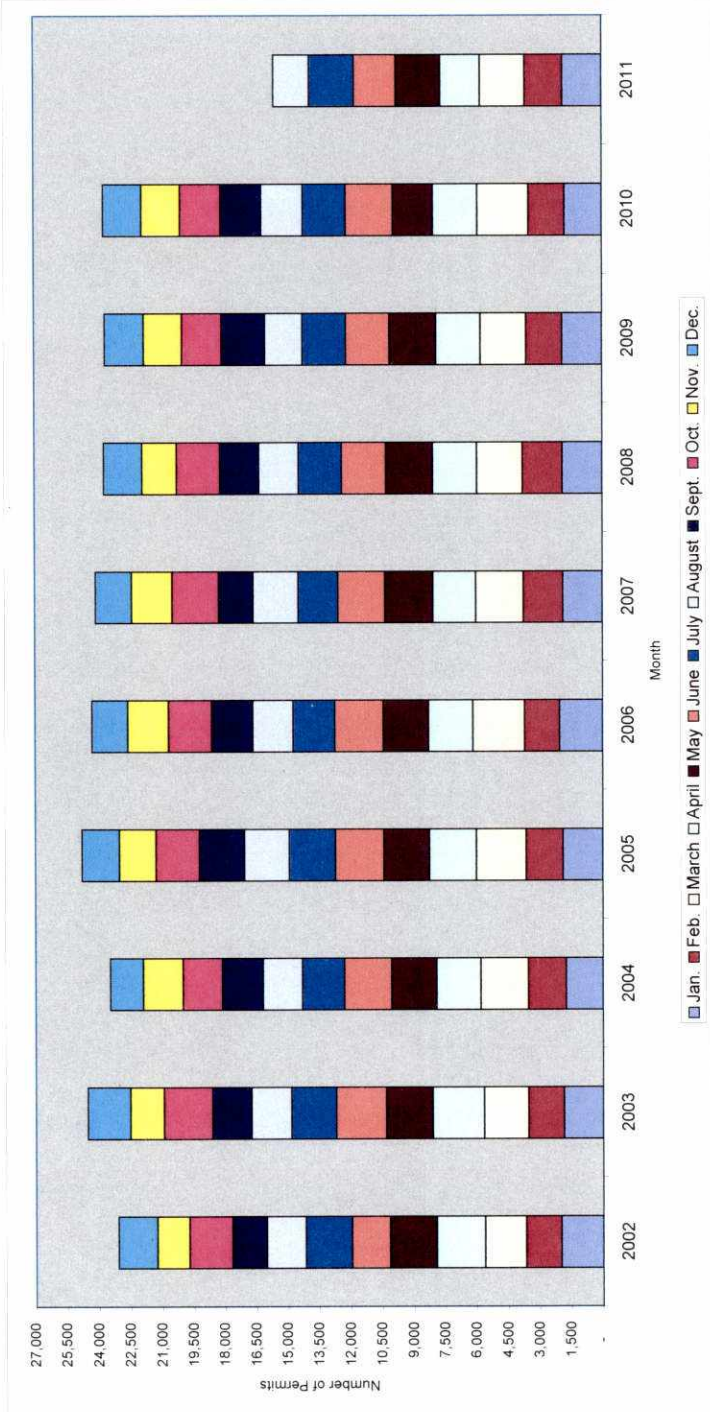


Year	Jan.	Feb.	March	April	May	June	July	August	Sept.	Oct.	Nov.	Dec.	YTD
2002	353,410	313,243	355,268	426,120	360,535	280,339	347,862	330,283	261,571	346,655	288,752	358,450	4,022,707
2003	318,294	305,886	372,502	459,437	344,198	373,553	338,810	307,243	335,222	372,224	309,155	408,169	4,244,694
2004	313,972	329,966	427,601	446,216	383,271	396,163	339,237	360,056	342,942	336,506	369,914	314,803	4,350,646
2005	355,553	341,321	467,680	426,007	369,174	406,381	331,317	382,387	357,795	362,094	348,003	316,997	4,464,709
2006	382,812	316,151	462,936	387,595	394,608	386,631	341,866	338,518	352,813	351,345	376,704	316,225	4,408,204
2007	352,181	353,684	431,961	363,414	398,328	368,450	316,589	369,010	288,009	378,782	379,530	298,547	4,298,485
2008	360,101	360,566	418,289	380,958	391,798	339,457	312,174	314,426	315,513	354,565	318,626	328,157	4,194,630
2009	338,254	326,762	384,473	349,586	363,205	318,476	314,881	313,900	352,308	308,154	330,764	322,288	4,023,061
2010	301,257	295,113	405,354	354,287	337,624	361,003	318,990	332,413	343,708	318,876	348,027	346,427	4,063,079
2011	336,107	322,819	393,228	340,026	358,455	334,927	328,543	355,508					2,769,613

Annual Revenue Comparison Through August

Year	Annual Rev Through August	Change from Prior Year	Average Revenue Ea.
2002	2,767,080	\$ 172.80	\$ 172.80
2003	2,819,924	52,844	\$ 168.61
2004	2,986,482	166,558	\$ 184.77
2005	3,079,820	93,338	\$ 180.89
2006	3,011,117	(68,703)	\$ 181.27
2007	2,953,617	(57,500)	\$ 178.10
2008	2,877,769	(75,848)	\$ 176.55
2009	2,709,547	(168,222)	\$ 169.49
2010	2,768,041	(5,606)	\$ 167.53
2011	2,769,613	63,572	\$ 177.95

Town of Bedford
Monthly Motor Vehicle Permits Issued



Year	Jan.	Feb.	March	April	May	June	July	August	Sept.	Oct.	Nov.	Dec.	YTD
2002	1,987	1,667	1,950	2,312	2,225	1,814	2,198	1,860	1,640	2,062	1,526	1,846	23,087
2003	1,848	1,685	2,115	2,449	2,216	2,372	2,129	1,911	1,879	2,301	1,598	2,012	24,515
2004	1,736	1,804	2,258	2,101	2,143	2,239	2,004	1,878	1,950	1,868	1,889	1,558	23,428
2005	1,872	1,759	2,367	2,231	2,165	2,309	2,195	2,128	2,171	2,056	1,740	1,761	24,754
2006	2,027	1,659	2,452	2,120	2,145	2,306	1,976	1,916	1,976	2,052	1,941	1,697	24,277
2007	1,861	1,870	2,266	2,042	2,287	2,214	1,892	2,152	1,648	2,234	1,912	1,711	24,089
2008	1,879	1,882	2,172	2,105	2,218	2,108	2,044	1,892	1,863	2,075	1,623	1,814	23,675
2009	1,868	1,711	2,174	2,120	2,206	2,073	2,055	1,779	2,078	1,895	1,817	1,835	23,611
2010	1,753	1,705	2,433	2,112	1,910	2,234	2,033	1,973	1,945	1,933	1,831	1,808	23,670
2011	1,840	1,782	2,128	1,890	2,119	1,983	2,113	1,709	-	-	-	-	15,564

Comparison of Number of Permits Issued Through August

Year	Ann. Permits Through August	Change from Prior Year
2002	16,013	-
2003	16,725	712
2004	16,163	(562)
2005	17,026	863
2006	16,611	(415)
2007	16,584	(27)
2008	16,300	(284)
2009	15,986	(314)
2010	16,153	167
2011	15,564	(589)